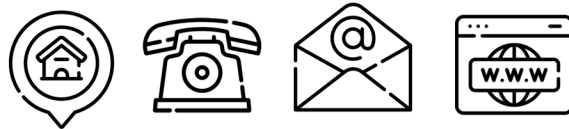


HOSTAL CAN MARET



CONTACT



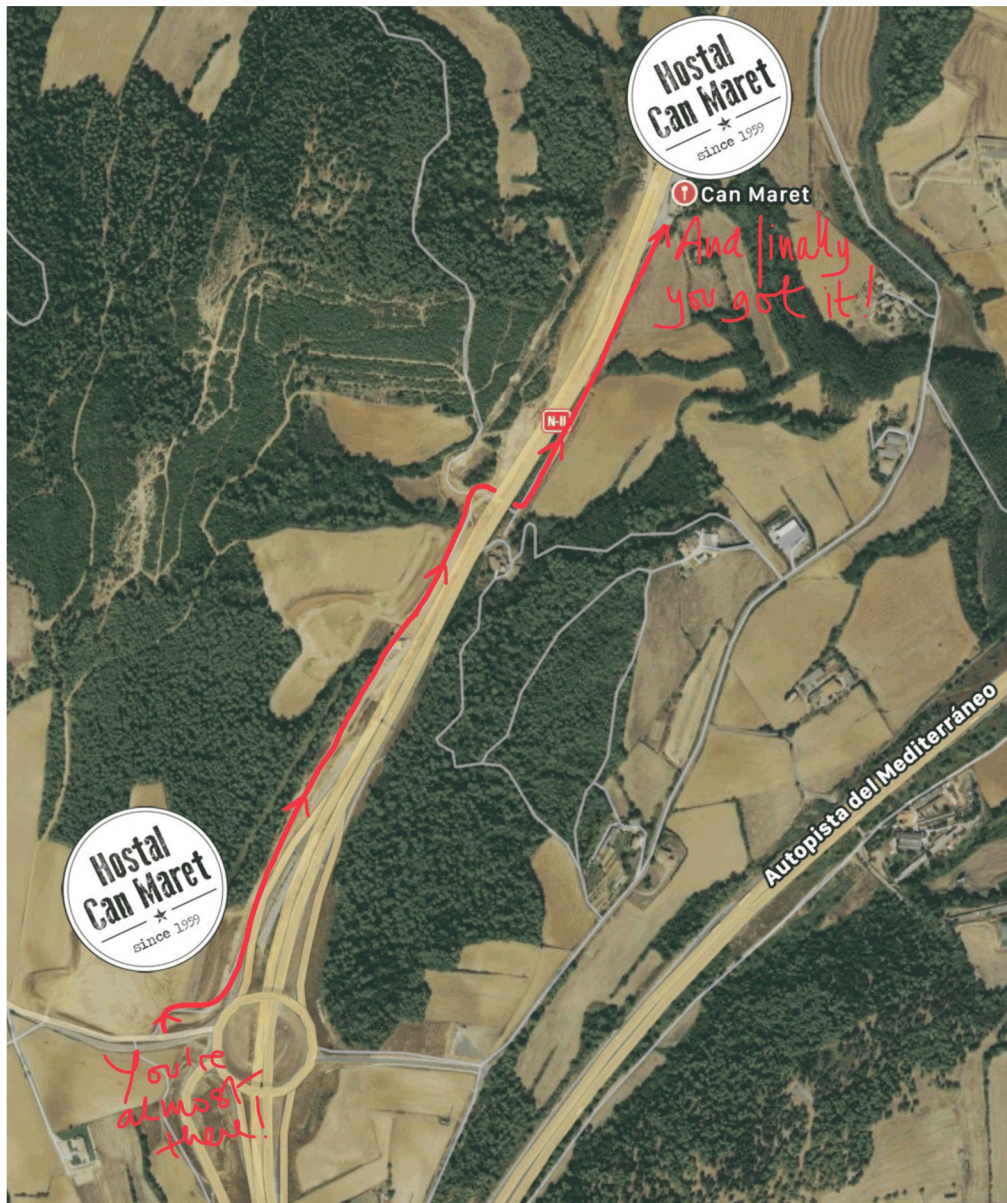
HOSTAL CAN MARET

Carretera Nacional II km. 734 Terradelles
17468 Vilademuls GIRONA

+34 972 560 405

info@hostalcanmaret.com
www.hostalcanmaret.com

Satellite Wiew



How to get to Hostal Can Maret

GPS Coordinates: 42.108279, 2.899086

Please, note that we have suffered modifications to the road that are not yet reflected in most maps and the access to these coordinates is not usually correctly indicated in most GPS. For this reason, we ask you not to follow the indications of your GPS or Google Maps and we enclose the additional indications as well as [a link to WAZE](https://bit.ly/3jBw3qi) that will guide you correctly:

<https://bit.ly/3jBw3qi>

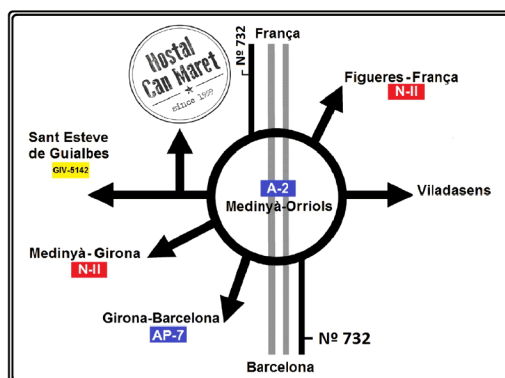
From Girona or Barcelona

AP-7 Autopista del Mediterrani:

1. On the AP-7 motorway, take **the exit 'Vilademuls'** (stay alert: it's an exit without number between n°6 'Girona Nord' and n°5 'L'Escala') and, about 500 meters after the toll and always direction Figueres - La Jonquera, take **exit n° 732**.
2. Once you get to a roundabout, take the third exit there to **Sant Esteve de Guialbes (GIV-5142)**.
3. **Turn immediately to the right** and, after 1.5 km, you will reach Hostal Can Maret (see the graph below).

Carretera Nacional II:

1. After **Medinyà** and **Vilafreser** towns you'll get to a roundabout, take the fourth exit there to **Sant Esteve de Guialbes (GIV-5142)**.
2. **Turn immediately to the right** and, after 1.5 km, you will reach Hostal Can Maret (see the graph below).



From Banyoles or Besalú

1. From Banyoles, **head towards Girona on the C-66 'Carretera de Girona a Ripoll'** for approximately 15 km until you reach the entrance of the AP7 motorway n°6 'Girona Nord'. **Join the AP7 towards France**.
2. Take the first exit you'll find, named **'Vilademuls'** and, about 500 meters after the toll booth and always in the direction of Figueres - La Jonquera, take **exit 732**.
3. Once you get to a roundabout, take the third exit there to **Sant Esteve de Guialbes (GIV-5142)**.
4. **Turn immediately to the right** and after 1.5 km you will reach Hostal Can Maret (see the graph above).

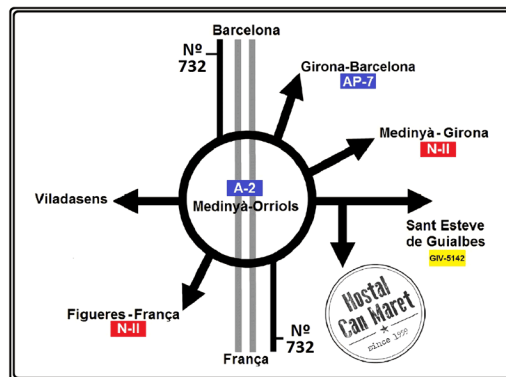
From Figueres or France

AP-7 Autopista del Mediterrani:

1. Take **exit n°5 'L'Escala'** of the AP-7 motorway and stay on the **N-II road to Girona/ Sant Julià de Ramis**.
2. Shortly after the Terradelles junction (on your right), you'll see that the Nacional II road becomes a highway. Join it and take the first exit, **n° 732**.
3. Once you get to a roundabout, take the first exit there to **Sant Esteve de Guialbes (GIV-5142)**.
4. **Turn immediately to the right** and, after 1.5 km, you will reach **Hostal Can Maret** (see the graph below).


Carretera Nacional II:

1. Approximately **3 kilometers after Orriols**, and once you have passed the Terradelles junction (on your right), you'll see that the Nacional II road becomes a highway. Join it and take the first exit, **number 732**.
2. Once you get to a roundabout, take the first exit there to **Sant Esteve de Guialbes (GIV-5142)**.
3. **Turn immediately to the right** and, after 1.5 km, you will reach **Hostal Can Maret** (see the graph below).



Need more help? Call us!

These are detailed directions to get to us from different geographical points. If you prefer, you can also call us from a nearby point, such as the Vilademuls or L'Escala motorway exits, and we will guide you by phone =)

 +34 972 560 405